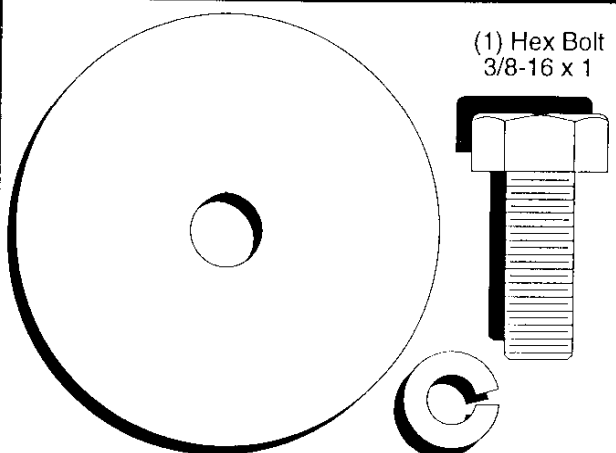


**ASSEMBLY/REPAIR
PARTS MANUAL
MODEL NO. WZ145H42C
Lawn Tractor**

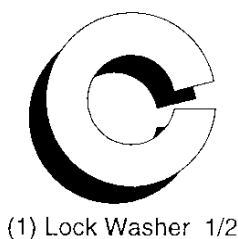
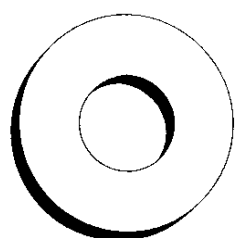
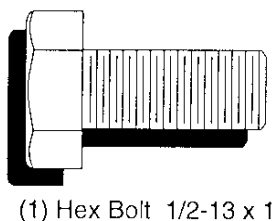
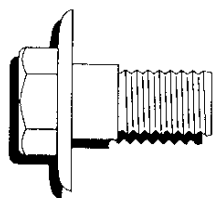
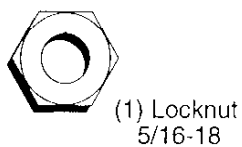
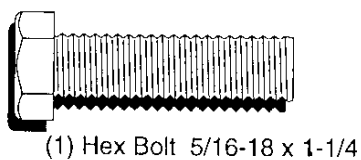
WIZARD

CONTENTS OF HARDWARE PACK

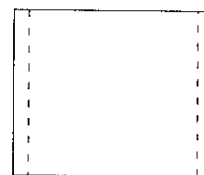
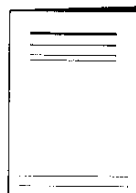
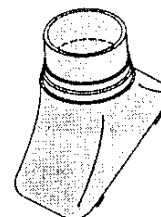
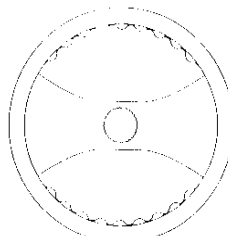
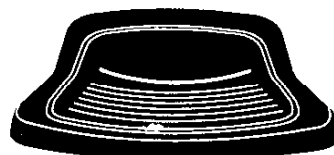
Parts Bag contents shown full size



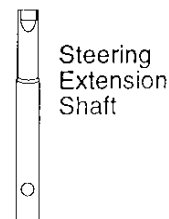
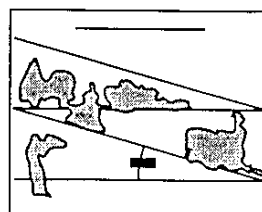
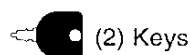
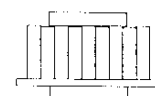
(1) Lockwasher 3/8



Parts packed separately in carton



Parts bag contents not shown full size



ASSEMBLY

Your new tractor has been assembled at the factory with exception of those parts left unassembled for shipping purposes. To ensure safe and proper operation of your tractor all parts and hardware you assemble must be tightened securely. Use the correct tools as necessary to insure proper tightness.

TOOLS REQUIRED FOR ASSEMBLY

A socket wrench set will make assembly easier. Standard wrench sizes are listed.

- | | |
|--------------------|---------------------|
| (1) 9/16" wrench | (1) 3/4" wrench |
| (2) 7/16" wrenches | Tire pressure gauge |
| (2) 1/2" wrench | Utility knife |

When right or left hand is mentioned in this manual, it means when you are in the operating position (seated behind the steering wheel).

TO REMOVE TRACTOR FROM CARTON

UNPACK CARTON

- Remove all accessible loose parts and parts cartons from carton (See page 2).
- Cut, from top to bottom, along lines on all four corners of carton, and lay panels flat.
- Check for any additional loose parts or cartons and remove.

BEFORE ROLLING TRACTOR OFF SKID

ATTACH STEERING WHEEL (See Fig. 1)

ASSEMBLE EXTENSION SHAFT AND BOOT

- Slide extension shaft onto lower steering shaft. Align mounting holes in extension and lower shafts and install 5/16 hex bolt and locknut. Tighten securely.

IMPORTANT: TIGHTEN BOLT AND NUT SECURELY TO 18-22 FT. LBS TORQUE.

- Place tabs of steering boot over tab slots in dash and push down to secure.

INSTALL STEERING WHEEL

- Position front wheels of the tractor so they are pointing straight forward.
- Slide steering wheel adapter onto steering shaft extension.
- Position steering wheel so cross bars are horizontal (left to right) and slide inside boot and onto adapter.
- Assemble large flat washer, 3/8 lock washer, 3/8 hex bolt and tighten securely.
- Snap steering wheel insert into center of steering wheel.
- Remove protective materials from tractor hood and grill.

IMPORTANT: CHECK FOR AND REMOVE ANY STAPLES IN SKID THAT MAY PUNCTURE TIRES WHERE TRACTOR IS TO ROLL OFF SKID.

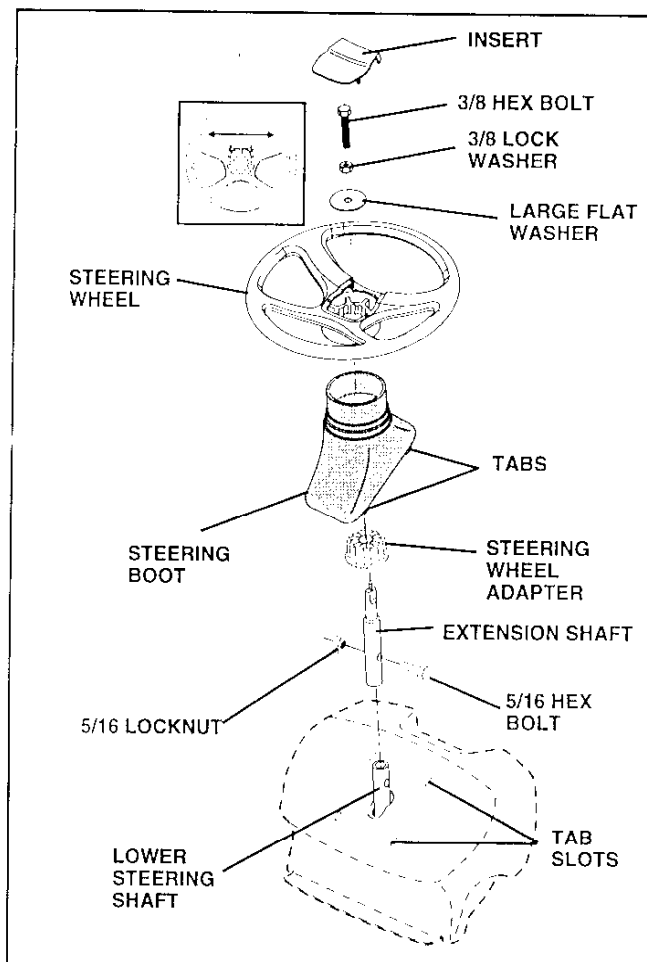


FIG. 1

TO ROLL TRACTOR OFF SKID (See Operator's Manual for location of controls)

- Press lift lever plunger and raise attachment lift lever to its highest position.
- Release parking brake by depressing clutch/brake pedal.
- Place freewheel control in freewheeling position to disengage transmission (See "TO TRANSPORT" in Operator's Manual).
- Roll tractor forward off skid.
- Remove banding holding discharge guard up against tractor.

ASSEMBLY

HOW TO SET UP YOUR TRACTOR

CONNECT BATTERY (See Figs. 2 and 3)



CAUTION: Do not short battery terminals by allowing a wrench or any other object to contact both terminals at the same time. Before connecting battery, remove metal bracelets, wristwatch bands, rings, etc.

Positive terminal must be connected first to prevent sparking from accidental grounding.

- Remove cardboard packing from seat pan and lift seat pan to raised position.
- Open battery box door and remove protective plastic.
- Remove terminal protective caps and discard.
- If this battery is put into service after month and year indicated on label (label located between terminals) charge battery for minimum of one hour at 6-10 amps.
- First connect RED battery cable to positive (+) terminal with hex bolt and keps nut as shown. Tighten securely.
- Connect BLACK grounding cable to negative (-) terminal with remaining hex bolt and keps nut. Tighten securely.
- Close battery box door.

Open battery box door for:

- Inspection for secure connections (to tighten hardware).
- Inspection for corrosion.
- Testing battery.
- Jumping (if required).
- Periodic charging.

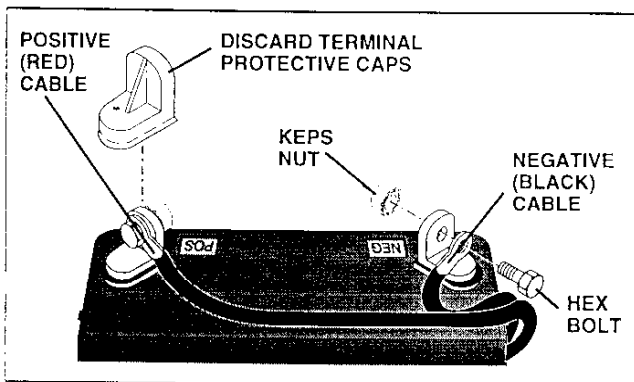


FIG. 2

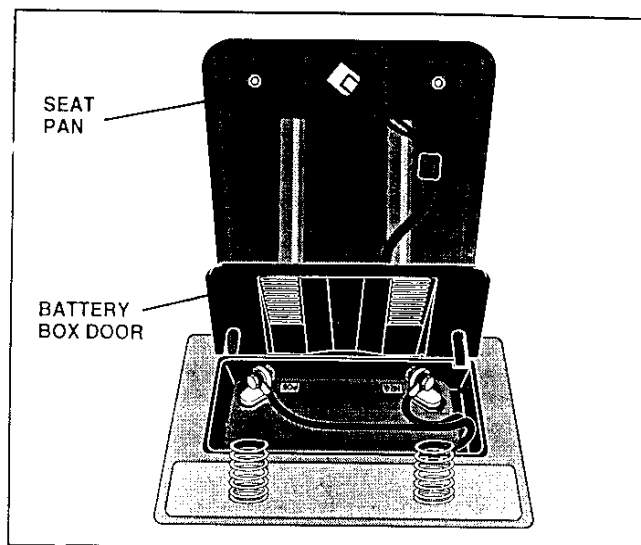


FIG. 3

INSTALL SEAT (See Fig. 4)

Adjust seat before tightening adjustment bolt.

- Remove cardboard packing on seat pan.
- Place seat on seat pan and assemble shoulder bolt. Tighten shoulder bolt securely.
- Assemble adjustment bolt, lock washer and flat washer loosely. Do not tighten.
- Lower seat into operating position and sit on seat.
- Slide seat until a comfortable position is reached which allows you to press clutch/brake pedal all the way down.
- Get off seat without moving its adjusted position.
- Raise seat and tighten adjustment bolt securely.

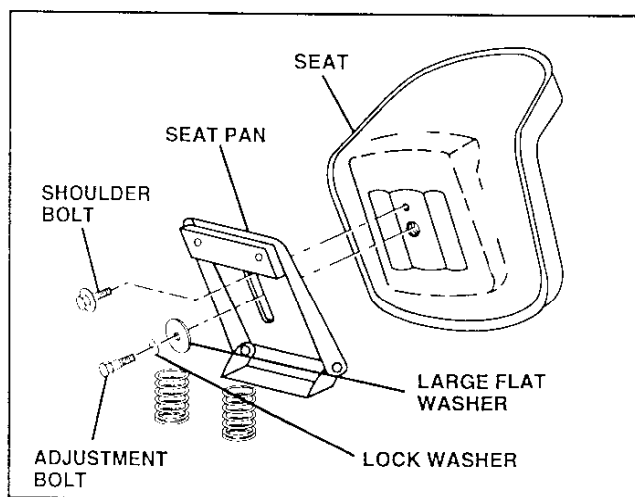


FIG. 4

ASSEMBLY

CHECK TIRE PRESSURE

The tires on your tractor were overinflated at the factory for shipping purposes. Correct tire pressure is important for best cutting performance.

- Reduce tire pressure to 14 PSI in front tires and 12 PSI in rear tires.

CHECK DECK LEVELNESS

For best cutting results, mower housing should be properly leveled. See "TO LEVEL MOWER HOUSING" in the Service and Adjustments section of operator's manual.

CHECK FOR PROPER POSITION OF ALL BELTS

See the figures that are shown for replacing motion and mower blade drive belts in the Service and Adjustments section of operator's manual. Verify that the belts are routed correctly.

CHECK BRAKE SYSTEM

After you learn how to operate your tractor, check to see that the brake is properly adjusted. See "TO ADJUST BRAKE" in the Service and Adjustments section of operator's manual.

✓ CHECKLIST

BEFORE YOU OPERATE AND ENJOY YOUR NEW TRACTOR, WE WISH TO ASSURE THAT YOU RECEIVE THE BEST PERFORMANCE AND SATISFACTION FROM THIS QUALITY PRODUCT.

PLEASE REVIEW THE FOLLOWING CHECKLIST:

- ✓ All assembly instructions have been completed.
- ✓ No remaining loose parts in carton.
- ✓ Battery is properly prepared and charged. (Minimum 1 hour at 6 amps).
- ✓ Seat is adjusted comfortably and tightened securely.
- ✓ All tires are properly inflated. (For shipping purposes, the tires were overinflated at the factory).
- ✓ Be sure mower deck is properly leveled side-to-side/ front-to-rear for best cutting results. (Tires must be properly inflated for leveling).
- ✓ Check mower and drive belts. Be sure they are routed properly around pulleys and inside all belt keepers.
- ✓ Check wiring. See that all connections are still secure and wires are properly clamped.
- ✓ Before driving tractor, be sure freewheel control is in drive position.

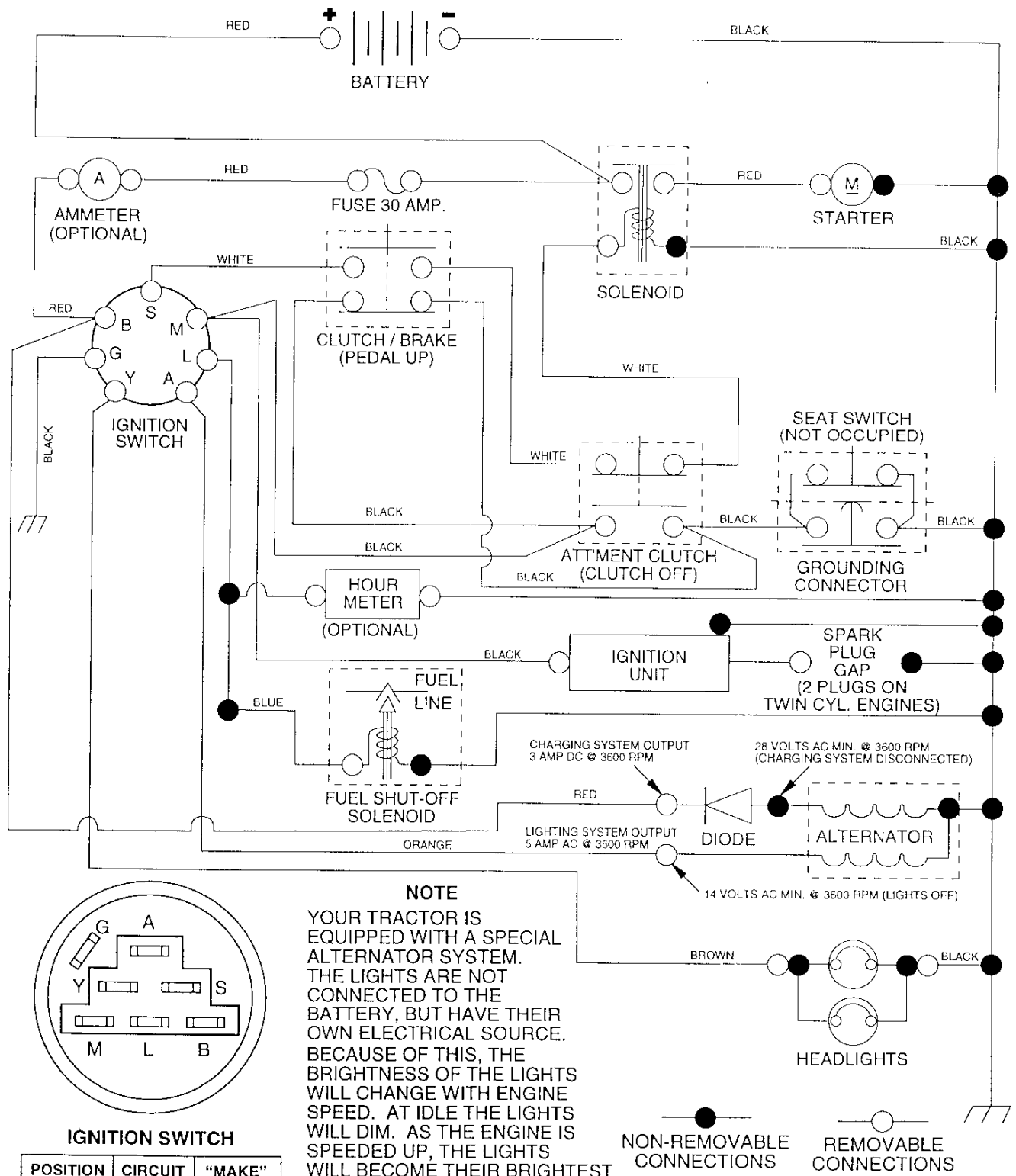
WHILE LEARNING HOW TO USE YOUR TRACTOR, PAY EXTRA ATTENTION TO THE FOLLOWING IMPORTANT ITEMS:

- ✓ Engine oil is at proper level.
- ✓ Fuel tank is filled with fresh, clean, regular unleaded gasoline.
- ✓ Become familiar with all controls - their location and function. Operate them before you start the engine.
- ✓ Be sure brake system is in safe operating condition.
- ✓ It is important to purge the transmission before operating your tractor for the first time. Follow proper starting and transmission purging instructions (See "TO START ENGINE" and "PURGE TRANSMISSION" in the Operation section of this manual).

SERVICE NOTES

TRACTOR -- MODEL NUMBER WZ145H42C

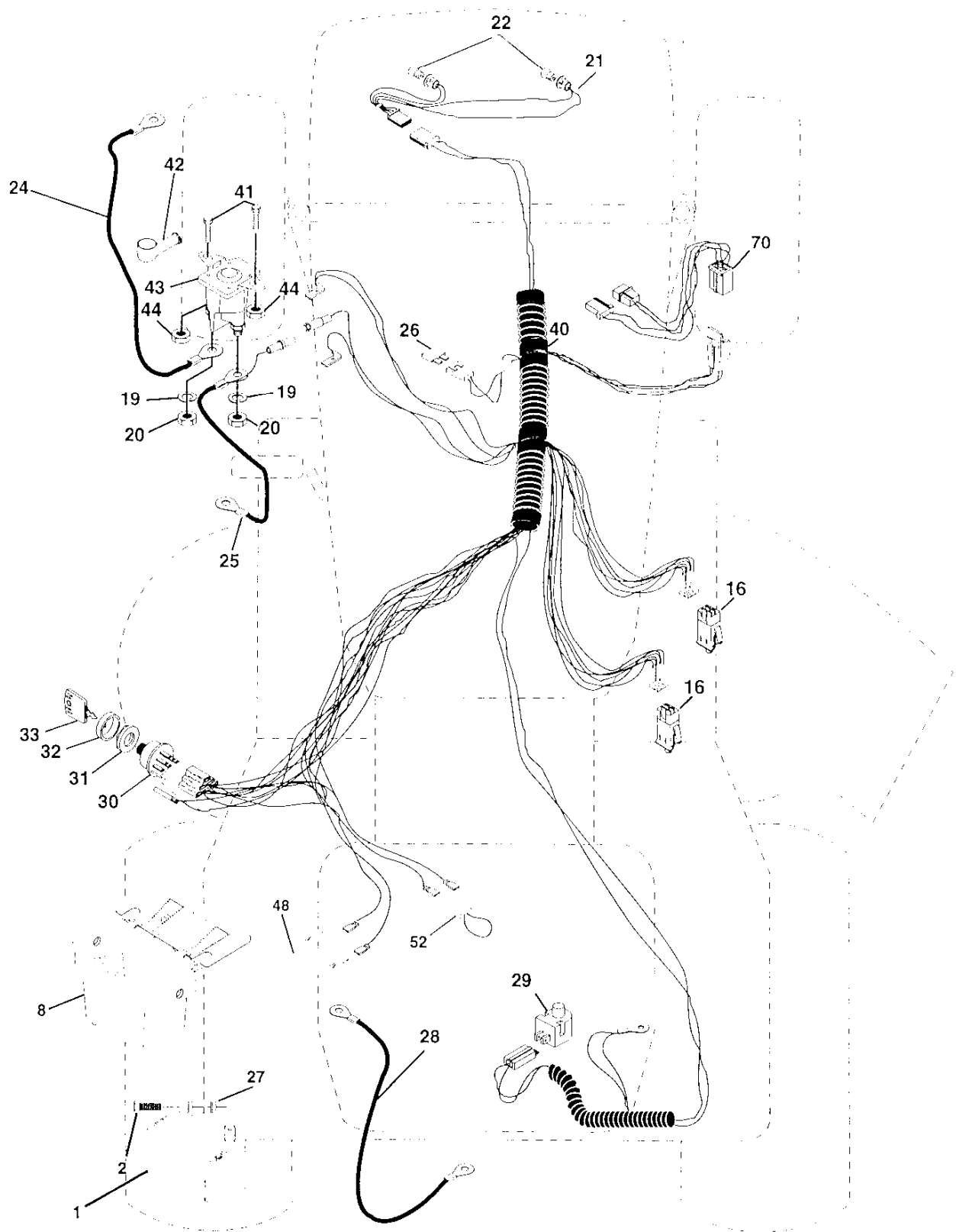
SCHEMATIC



REPAIR PARTS

TRACTOR - - MODEL NUMBER WZ145H42C

ELECTRICAL



REPAIR PARTS

TRACTOR - - MODEL NUMBER WZ145H42C

ELECTRICAL

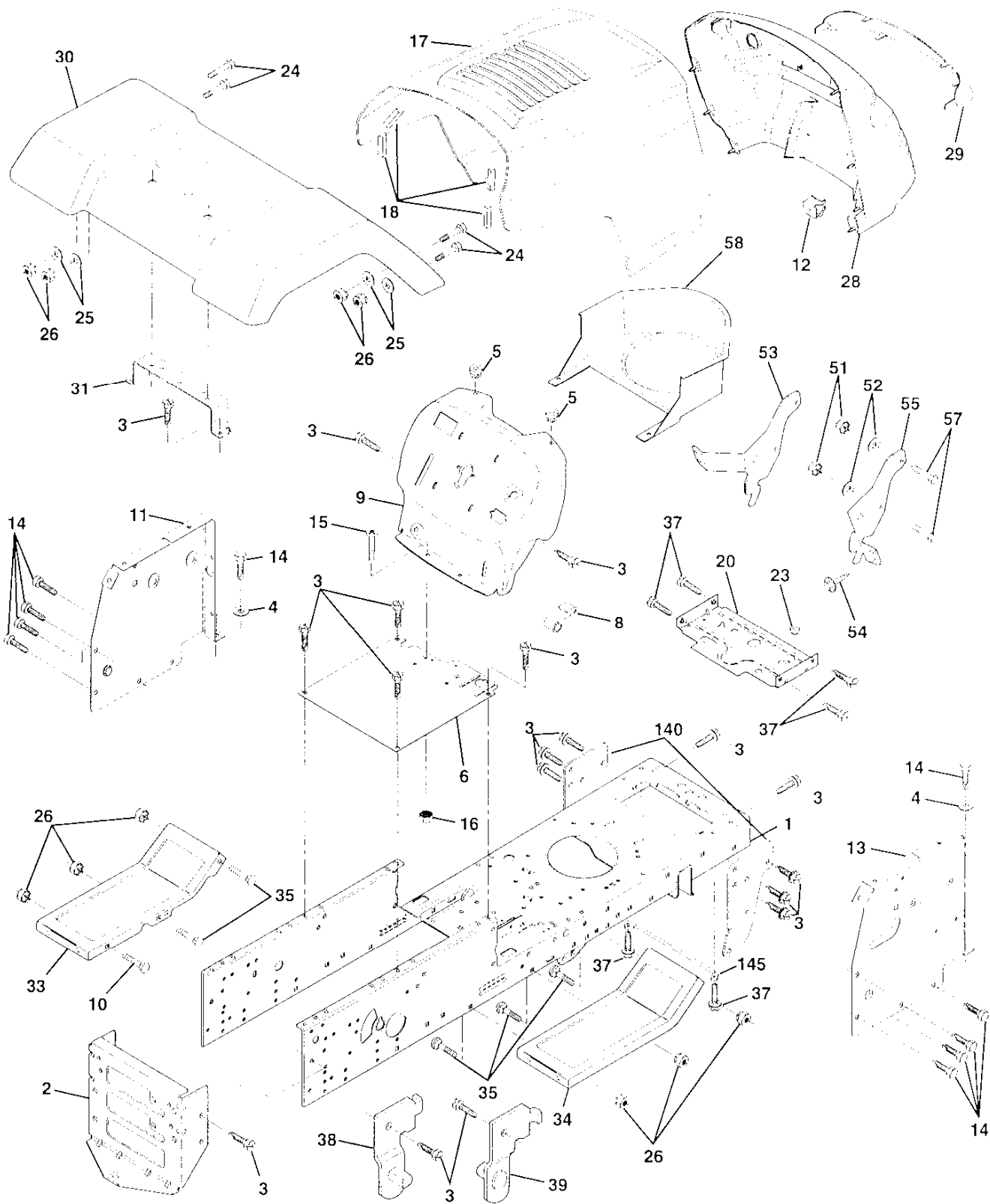
KEY NO.	PART NO.	DESCRIPTION
1	144925	Battery 12 Volt 25 AMP
2	74760412	Bolt Hex Hd 1/4-20unc X 3/4
8	156417	Case Battery
16	153664	Switch Interlock Push-In
19	10090400	Washer Lock 1/4
20	73350400	Nut Jam Hex 1/4-20 Unc
21	166181	Harness Asm Light W/4152j
22	4152J	Bulb Light #1156
24	4799J	Cable Battery 6 Ga 11" red
25	146147	Cable Battery 6 Ga 44" red
26	166180	Fuse 15 AMP
27	73510400	Nut Keps Hex 1/4-20
28	4207J	Cable Ground 6 Ga 12" black
29	121305X	Switch Plunger Nc Gray
30	140301	Switch Ign 4 pos w/lights
31	124211X	Nut Ignition
32	141226	Cover Sw Ignition
33	122147X	Key Ign Modleded Generic
40	166145	Harness Ignition
41	71110408	Bolt Blk Fin Hex 1/4 - 20 x 1/2
42	131563	Cover Terminal Red
43	145673	Solenoid
44	73640400	Nut Keps Hex 1/4-20 Unc
48	140844	Adapter Ammeter
52	141940	Protection Wire Loop
70	166659	Harness, Eng.

NOTE: All component dimensions give in U.S. inches
1 inch = 25.4 mm.

REPAIR PARTS

TRACTOR -- MODEL NUMBER WZ145H42C

CHASSIS AND ENCLOSURES



REPAIR PARTS

TRACTOR - - MODEL NUMBER WZ145H42C

CHASSIS AND ENCLOSURES

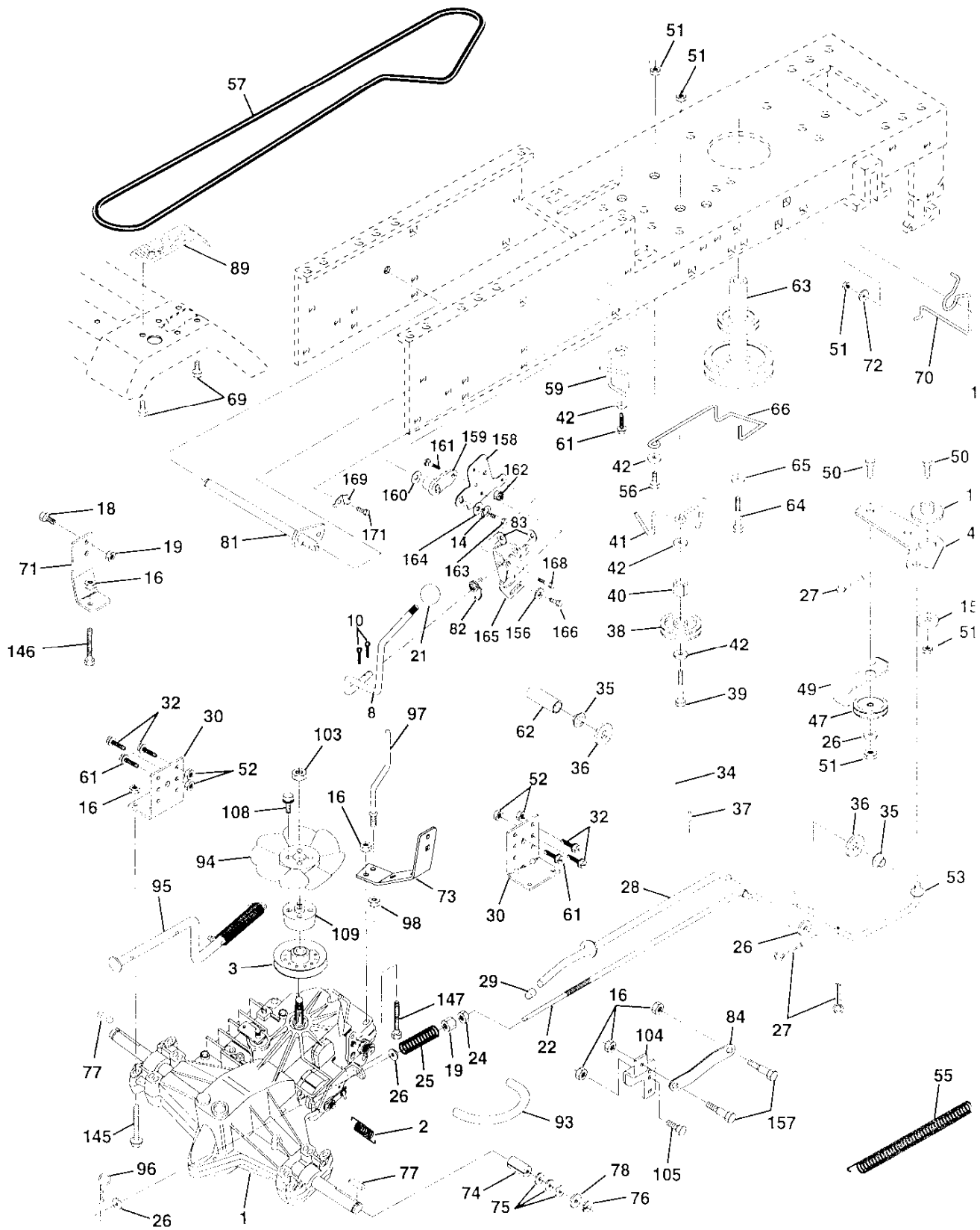
KEY NO.	PART NO.	DESCRIPTION
1	165480	Chassis LT Stamping
2	140356	Drawbar, Stretch 94
3	17490612	Screw, Thdrol. 3/8-16 x 3/4 Ty-TT
4	19131216	Washer 13/32 x 3/4 x 16 Gauge
5	155272	Bumper Hood/Dash
6	155923	Saddle LT Fender Shift
8	155138	Clip Retainer Slide-On
9	161937X011	Dash P/L
10	72140608	Bolt, Rdhd Sqnk 3/8-16 x 1
11	155927	Panel Asm. Dash LH
12	145660	Clip Tinnerman Grille P/L
13	155934X010	Dash, Panel RH
14	17490608	Screw Thdrol 3/8-16 x 1/2 Ty-tt
15	74180512	Screw Mach.Trhd 5/16-18 UNC x 3/4
16	73510500	Nut Keps 5/16-18 UNC
17	159639X505	Hood Pnt Stl PL
18	126938X	Bumper Hood
20	156437	Plate Mtg. Battery Fuel Tank
23	124028X	Bushing Snap Nyl Blk Fuel Line
24	74780616	Bolt, Hex , Fin. 3/8-16UNC x 1 Gr. 5
25	19131312	Washer 13/32 x 13/16 x12 Gauge
26	73800600	Nut Lock Hex w/Ins. 3/8-16 Unc
28	157373	Grille
29	140273X599	Lens Grille
30	157583X505	Fender Pnt
31	136619	Bracket Fender
33	145244X505	Footrest Pnt., LH
34	145243X505	Footrest Pnt., RH
35	72110606	Bolt Rdhd Sht. Sqnk 3/8-16 X 3/4
37	17490508	Screw Thdrol 5/16-18 x 1/2 Tyt
38	139886	Bracket Asm. Pvt. LH Mower Rear
39	139887	Bracket Asm. Pvt. RH Mower Rear
51	73800400	Nut Lock Hex W/Ins 1/4-20
52	19091416	Washer 9/32 x 7/8 x 16 Ga.
53	144697	Bracket, Grille LH
54	161464	Screw Hex WSHD 8-18 x 7/8
55	144696	Bracket Grille RH
57	74780412	Bolt Fin Hex 1/4-20 x 3/4
58	150127	Air Duct Engine P/L
140	158418	Bracket Suspension Front
145	156524	Rod Pivot Chassis/Hood
- -	5479J	Plug Btn Blk .359 Dia Ch/Inf

NOTE: All component dimensions given in U.S. inches
1 inch = 25.4 mm

REPAIR PARTS

TRACTOR - - MODEL NUMBER WZ145H42C

DRIVE



REPAIR PARTS

TRACTOR - - MODEL NUMBER WZ145H42C

DRIVE

KEY NO.	PART NO.	DESCRIPTION
1	-----	Transmission, Asm.
2	142431	Spring, Return, Brake
3	144698	Pulley, Transmission
8	165619	Rod, Shift
10	76020416	Pin, Cotter 1/8 x 1
14	10040400	Washer Lock Hvy Helical 1/4
16	73800500	Nut, Lock Hex w/Ins 5/16-18 UNC
18	74780616	Bolt Hex 3/8-16 UNC x 1 Gr.5
19	73800600	Nut, Lock Hex w/Wsh 3/8-16 UNC
21	106933X	Knob Rd. 1/2-13 Plstc. Thds. Blk.
22	145627	Rod, Brake
24	73350600	Nut
25	106888X	Spring, Rod, Brake
26	19131316	Washer 13/32 x 13/16 x 16 Ga.
27	76020412	Pin, Cotter 1/8 x 3/4
28	145204	Rod, Parking Brake
29	71673	Cap, Parking Brake
30	130807	Bracket, Transmission
32	74760512	Bolt Hex 5/16-18 UNC x 3/4
34	155071	Shaft, Foot Pedal
35	120183X	Bearing, Nylon
36	19211616	Washer
37	1572H	Pin, Roll
38	131494	Pulley, Idler, Flat
39	74760644	Bolt
40	4470J	Spacer, Split
41	165838	Keeper, Belt, Idler
42	19131312	Washer 13/32 x 13/16 x 12 Ga.
47	127783	Pulley, Idler, V-Bolt
48	154407	Bellcrank Clutch Grnd Drustl
49	123205X	Retainer, Belt
50	74760624	Bolt
51	73680600	Nut
52	73680500	Nut Crownlock 5/16-28
53	105710X	Link, Clutch
55	105709X	Spring, Return, Clutch
56	74760620	Bolt, Hex 3/8-16 UNC x 1-1/4
57	141416	V-Belt, Drive
59	140312	Keeper, Belt, Center
61	17490612	Screw, Thdrol 3/8-16 x 3/4 Type TT
62	8883R	Cover, Pedal
63	140186	Pulley, Engine
64	71170764	Bolt Hex 7/16 x 4 Gr. 5
65	10040700	Washer
66	154778	Keeper, Belt Engine
69	142432	Screw

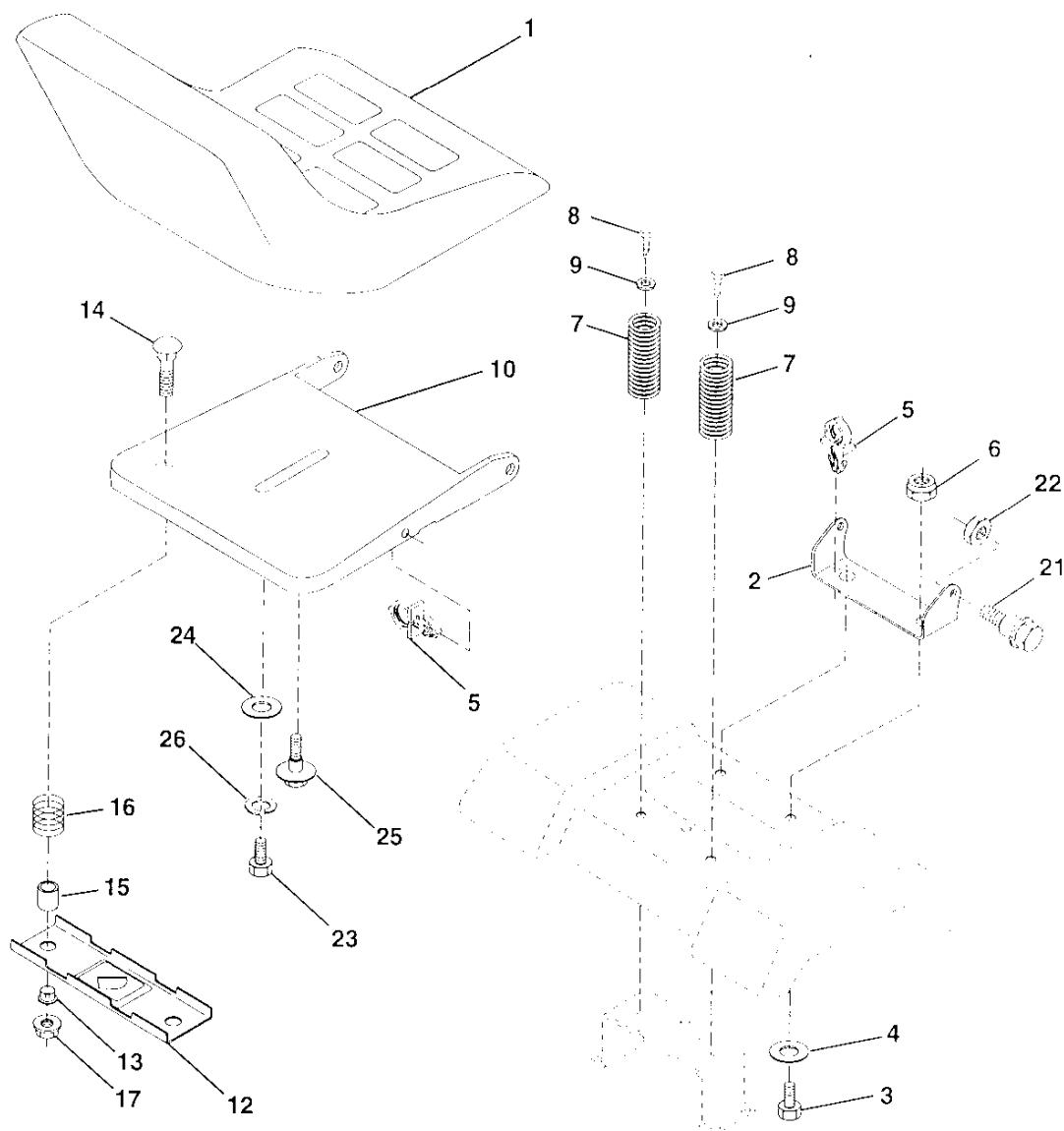
KEY NO.	PART NO.	DESCRIPTION
70	134683	Guide, Belt, Mower Drive RH
71	141417	Strap, Torque, Lh
72	19132012	Washer 13/32 x 1-1/4 x 12 Ga.
73	141418	Strap, Torque, Rh
74	121199X	Spacer, Split
75	121749X	Washer 25/32 x 1-1/4 x 16 Ga.
76	12000001	Ring, E
77	123583X	Key, Square
78	121748X	Washer 25/32 x 1-5/8 x 16 Ga.
81	165595	Asm, Shaft
82	123782X	Spring, Torsion
83	19171216	Washer 17/32 x 3/4 x 16 Ga.
84	165816	Link Transaxle Hydro
89	164893X428	Console, Shift
93	142564	Line Fuel
94	140462	Fan 7"
95	144643	Control Asm Bypass Hydro
96	4497H	Spring, Retainer 1"
97	144201	Keeper, Belt Rh
98	73510600	Nut Keps 3/8-16 UNC
103	73940800	Nut, Hex Jam Toplock 1/2-20 UNF
104	141421	Arm, Control Pump 500 Hydro
105	71070516	Bolt, Head Hex 5/16 x 18 x 1
108	17541026	Screw Hex Wh Hd #10-24 x 1-5/8
109	145098	Adaptor Fan Hydro Lt Hyd Alum
116	72110610	Bolt Rdhd Sq Neck 3/8-16 x 1-1/4
145	74490540	Belt Hex Flghd 5/16-18 x Gr. 5
146	74490536	Bolt Hex Flghd 5/16-18 x 2-1/4
147	74490524	Bolt Hex Flghd 5/16-18 x 1-1/2
150	165850	Bushing Bellcrank Grd. Drive
151	19133210	Washer 13/32 x 2 x 10
156	166002	Washer Srrtd 5/16 ID x 1.0 x .125 Tk
157	153236	Bolt Shoulder 5/16-18unc 2A
158	165589	Bracket Shift Mount
159	165494	Hub Tapered Flanged Shift LT
160	19292016	Washer 29/32 x 1-1/4 x 16 Ga.
161	72140406	Bolt Rdhd Sqnk 1/4-20 x 3/4 Gr. 5
162	73680400	Nut Crownlock 1/4-20 Unc
163	74780416	Bolt Hex Fin 1/4-20unc x 1 Gr. 5
164	19091010	Washer 5/8 x .281 x 10 Ga.
165	165623	Brkt. Pivot Lever
166	166880	5/16-18 x 5/8 TT Yellow
168	165492	Bolt Shoulder 5/16-18 x .561 TT
169	165581	Plate Fastening LT
171	17490608	Screw Thdrol 3/8-16 1/2 TY-TT

NOTE: All component dimensions given in U.S. inches
1 inch = 25.4 mm

REPAIR PARTS

TRACTOR - - MODEL NUMBER WZ145H42C

SEAT



KEY NO.	PART NO.	DESCRIPTION
1	127428	Seat
2	140551	Bracket, Pivot, Seat
3	74760616	Bolt
4	19131610	Washer 13/32 x 1 x 10 Ga.
5	145006	Clip, Push-in
6	73800600	Nut
7	124181X	Spring, Seat
8	17490616	Screw, Thdrol 3/8-16 x 1
9	19131614	Washer 13/32 x 1 x 14 Ga.
10	155925	Pan, Seat
12	121246X	Bracket, Mounting, Switch, Seat
13	121248X	Bushing, Nylon

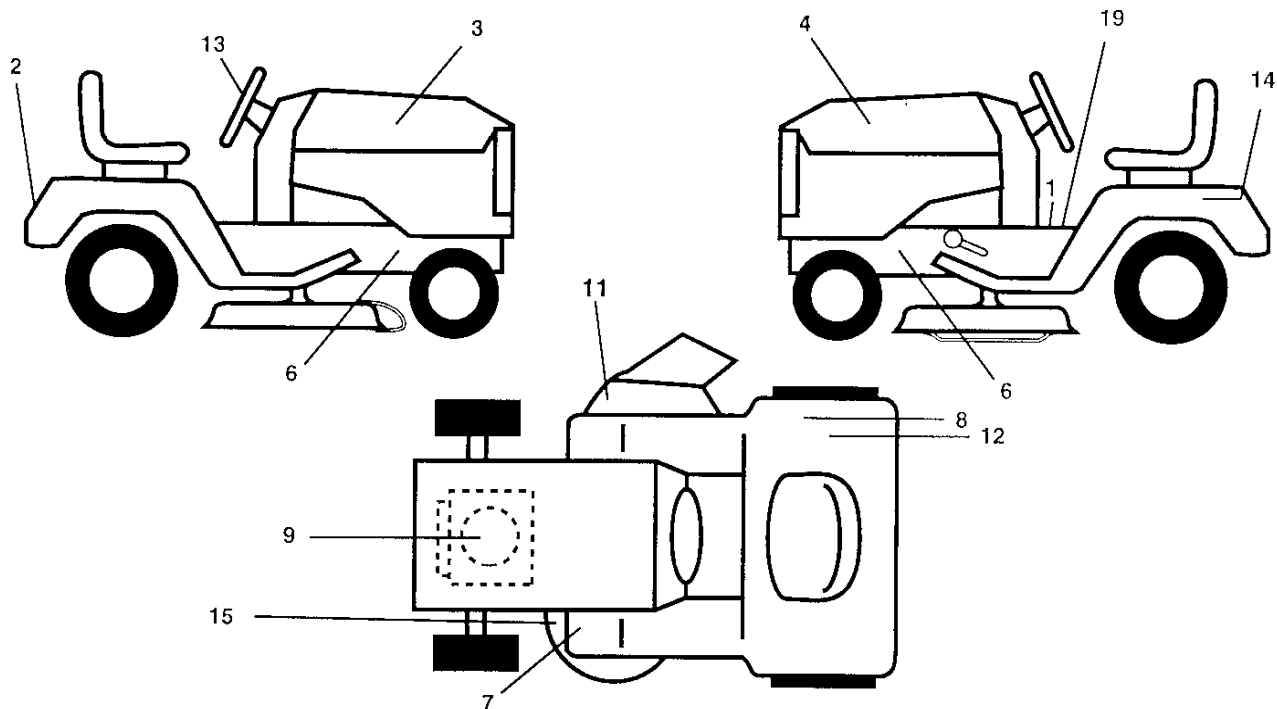
KEY NO.	PART NO.	DESCRIPTION
14	72050412	Nut, Crownlock 1/4-20 x 1-3/8
15	134300	Spacer, Split
16	121250X	Spring
17	123976X	Nut, Lock, Flange 1/4 Gr. 5
21	153236	Bolt, Shoulder 5/16-18 UNC
22	73800500	Nut
23	74780814	Bolt Fin Hex 1/2 - 13 x 7/8 Gr. 5
24	19171912	Washer 17/32 x 1-3/16 x 12 Ga.
25	127018X	Bolt Shoulder 5/16-18 x .62
26	10040800	Washer Lock Hvy Hcld Spr 1/2

NOTE: All component dimensions given in U.S. inches
1 inch = 25.4 mm

REPAIR PARTS

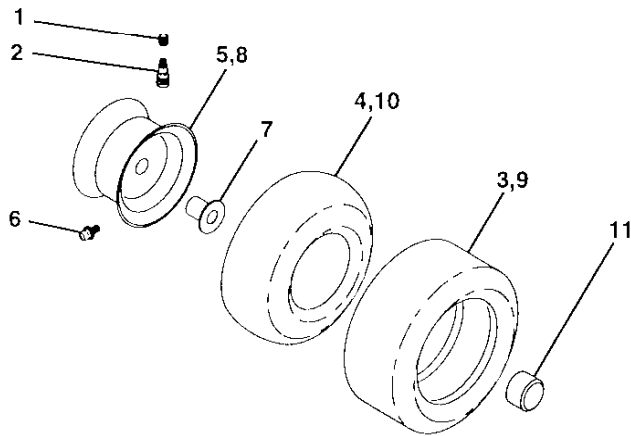
TRACTOR - - MODEL NUMBER WZ145H42C

DECALS



KEY NO.	PART NO.	DESCRIPTION	KEY NO.	PART NO.	DESCRIPTION
1	145498	Decal, Instruction, Operation	14	145005	Decal, Btry Dngr/Psn P/L Sym
2	163769	Decal, Fender Logo	15	160396	Decal, V-Belt
3	163834	Decal, Hood Rh	19	140837	Decal, Parking Brake
4	163835	Decal, Hood Lh	--	138311	Decal, Handle, Lift, Height Adjust (Lift Handle)
6	159736	Decal, Chassis Hot Muffler	--	162598	Decal, Drawbar Load Limit
7	159737	Decal, Brake/Clutch Symbol LT	--	133671	Pad Footrest
8	145437	Decal, Europe Stand CE	--	142341	Decal Drawerbar Cntrl Mut
9	165352	Decal, HP Engine	--	167890	Manual, Operators (Euro)
11	145494	Decal, Mower Cutting Symbol	--	167891	Manual, Repair Parts
12	126187X	Decal 100 DBA			
13	167108	Decal, Wheel Steering			

TIRES AND WHEELS



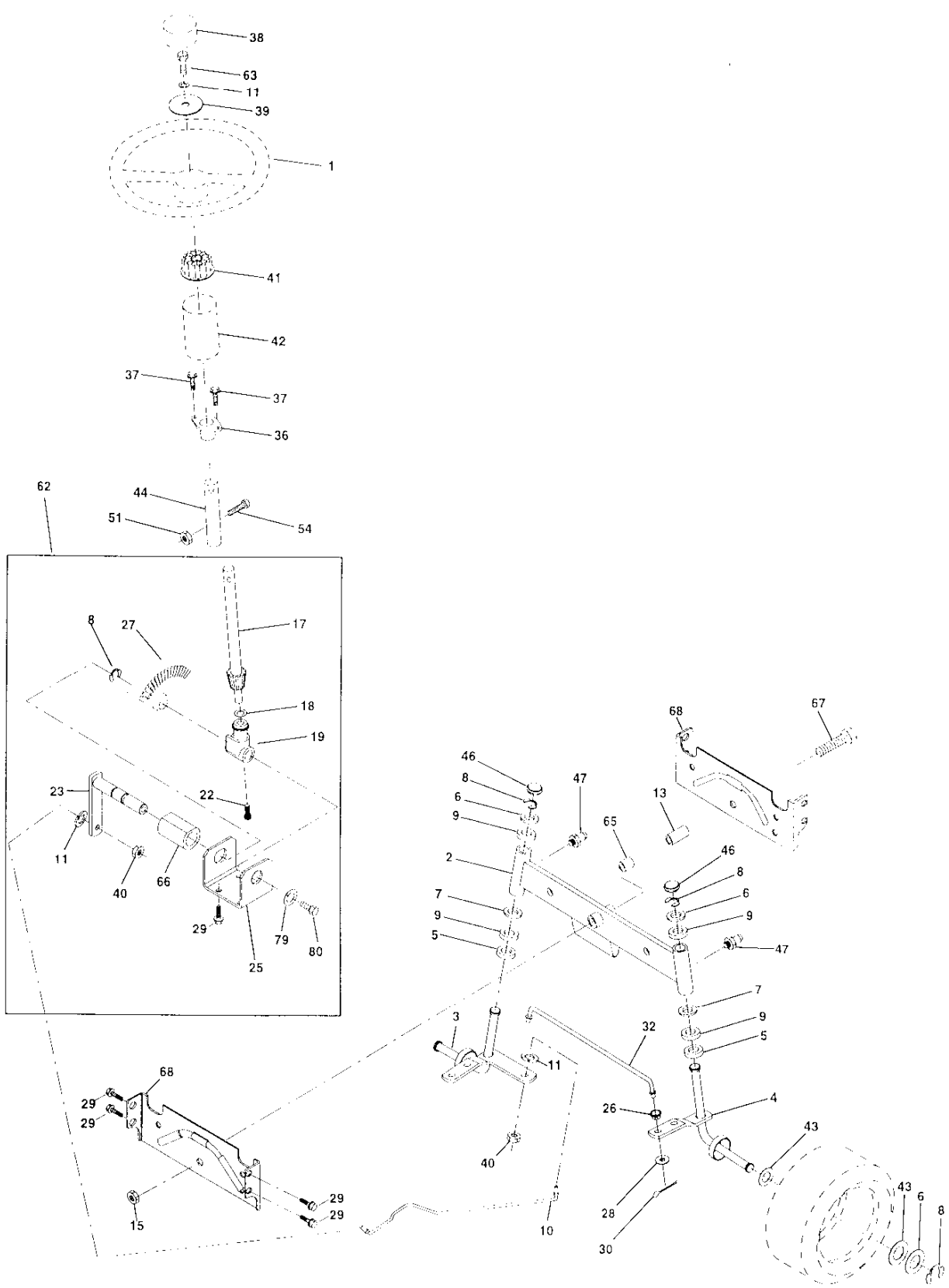
KEY NO.	PART NO.	DESCRIPTION
1	59192	Cap, Valve
2	65139	Stem, Valve
3	106222X	Tire Front
4	59904	Tube, Front (not furnished)
5	106732X427	Rim, Asm. Front
6	278H	Grease Fitting (rear tire only)
7	9040H	Bearing, Flange (front tire only)
8	106108X427	Rim, Asm. Rear
9	106268X	Tire, Rear TS. 18 x 9.5 - 9 C. Service
10	7152J	Tube, Rear (not furnished)
11	104757X	Cap, Axle
--	144334	Sealant, Tire (10 oz. Tube)

NOTE: All component dimensions given in U.S. inches
1 inch = 25.4 mm

REPAIR PARTS

TRACTOR - - MODEL NUMBER WZ145H42C

TEERING WHEEL



REPAIR PARTS

TRACTOR - - MODEL NUMBER WZ145H42C

STEERING WHEEL

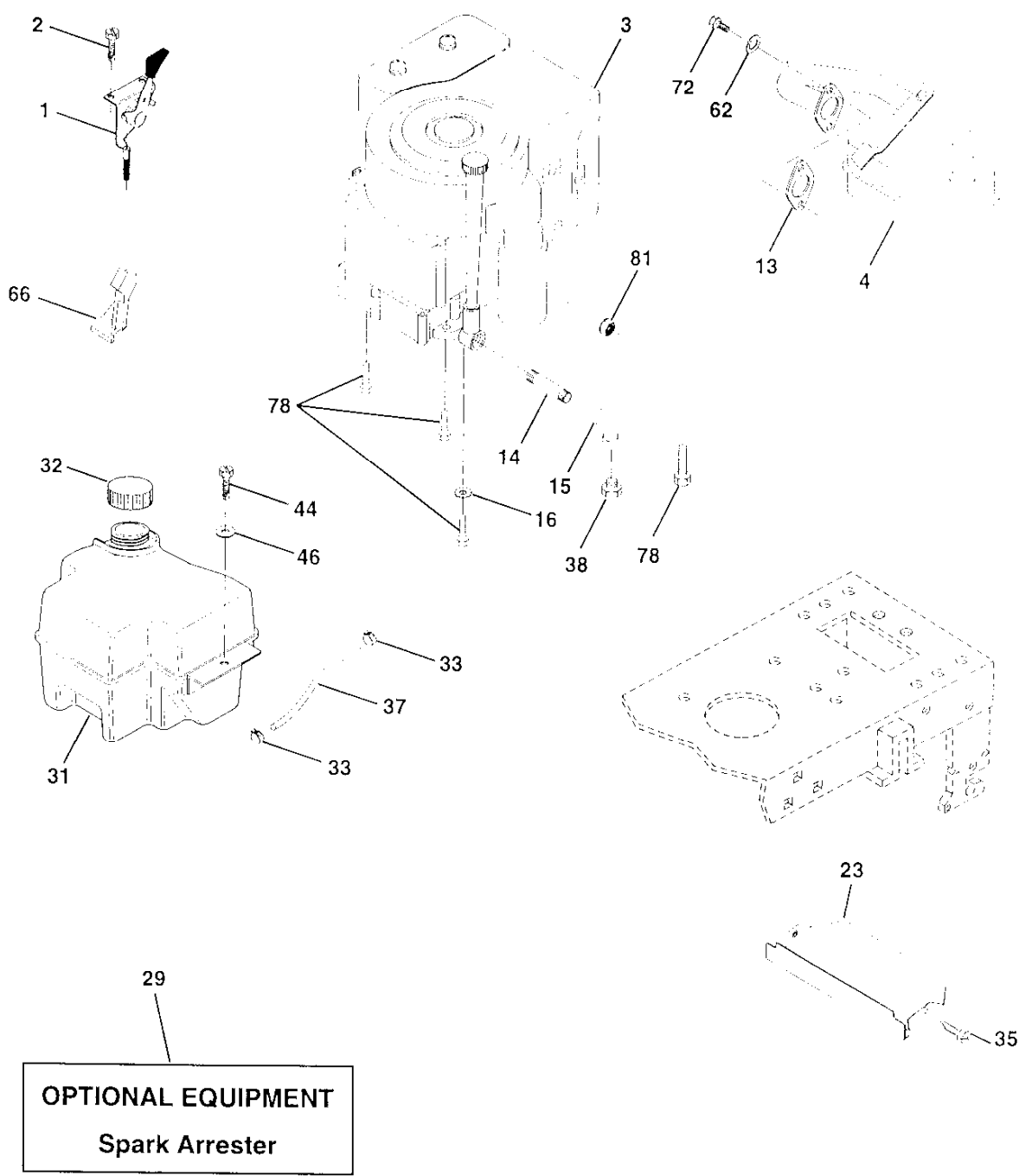
KEY NO.	PART NO.	DESCRIPTION
1	140044	Wheel Steering
2	154427	Axle Asm Front
3	156483	Spindle Asm LH
4	157473	Spindle Asm RH
5	6266H	Bearing, Race, Thrust Hardened
6	121748X	Washer 25/32 X 1-5/8 X 16 Ga
7	19272016	Washer 27/32 X 1-1/4 X 16 Ga
8	12000029	Ring Klip
9	3366R	Bearing
10	156438	Link Drag
11	10040600	Washer Lock Hvy Hlcl Spr 3/8
13	154779	Bearing Axle Stlt/Gt
15	73901000	Locknut, Hex, Jam, w/Washer Insert 5/8-11 Unc
17	156546	Steering, Assembly Shaft
18	57079	Washer Thrust 515x 750x 033
19	160395	Support Shaft
22	165857	Screw Hex Wsh Hd Torx
23	165851	Shaft Asm Pittman
25	154406	Bracket Steering
26	126847X	Bushing Link Drag Blk Lr
27	136874	Gear Sector
28	19131416	Washer 13/32 x 7/8 x 16 Ga.
29	17490612	Screw Thdrol. 3/8-16x3/4 Ty-tt
30	76020412	Pin Cotter 1/8 x 3/4 CAD
32	130465	Rod Connecting
36	155099	Bushing Steering
37	152927	Screw TT #10-32 X 5 x 3/8 Flange
38	140045	Cap Wheel Steering
39	19133808	Washer 13/32 x 2-3/8 x 8 Ga
40	7810H	Nut Lock Center 3/8-24 Unf
41	100711L	Adapter Wheel Strg
42	145054	Boot Shaft Steering
43	121749X	Washer 25/32 X 1 1/4 X 16 Ga
44	153720	Extension Steering
46	121232X	Cap Spindle
47	6855M	Fitting Grease
51	73800500	Nut Lock Hex W/Ins. 5/16-18 Unc P
54	74780520	Bolt Fin Hex 5/16-18 Unc 6 x 1-1/4
62	167902	Kit Steering Asm. Service
63	74780616	Bolt Fin Hex 3/8-16unc x 1 Gr. 5
65	154780	Spacer Axle
66	154404	Bearing Arm Pittman
67	74781044	Bolt Fin Hex 5/8-11 UNC x 2-3/4
68	154429	Brsce Axle
79	19132012	Washer 13/32 x 1-1/4 x 12 Ga.
80	74950612	Bolt Hex Nylon 3/8-16 x 3/4

NOTE: All component dimensions given in U.S. inches
1 inch = 25.4 mm

REPAIR PARTS

TRACTOR - - MODEL NUMBER WZ145H42C

ENGINE



REPAIR PARTS

TRACTOR - - MODEL NUMBER WZ145H42C

ENGINE

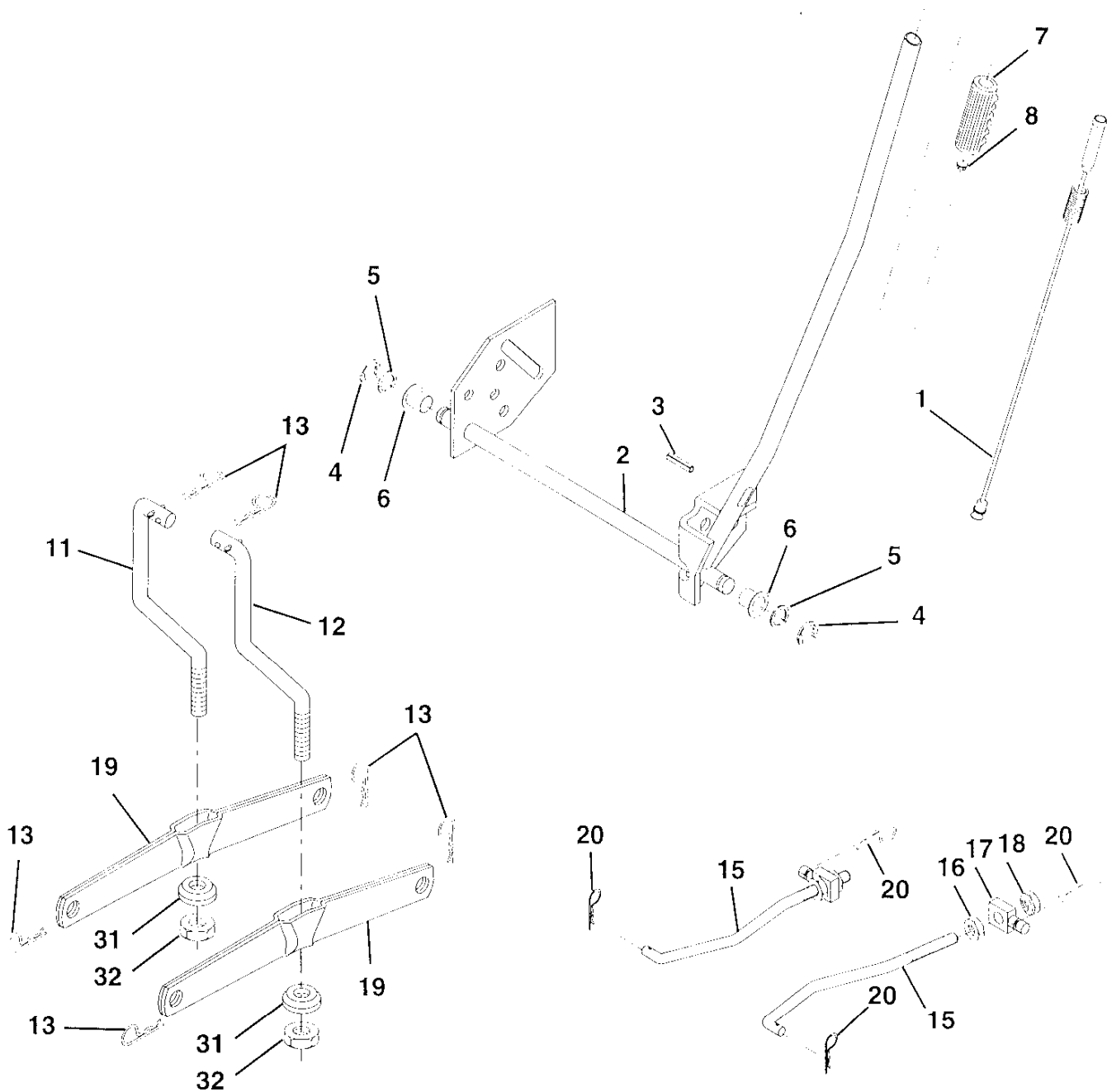
KEY NO.	PART NO.	DESCRIPTION
1	141359	Control Th/ch
2	17720410	Screw Hex Thd Cut 1/4-20x5/8 T
3	-----	Engine Briggs Model 287707 Order parts from engine manufacturer
4	137352	Muffler Exhaust B&S
13	165291	Gasket Eng 1 313 Id Tin Plated
14	13280324	Nipple Pipe 3/8 Npt X 3"
15	13200300	Elbow Std 90 Degree 3/8-18 Npt
16	11050600	Washer Lock Ext Tooth 3/8
23	159880	Shield BRN/DBR Guard
29	137180	Kit Spark Arrestor (Flat Scrn)
31	161911	Tank Fuel Front 2 00
32	140527	Cap Asm Fuel
33	123487X	Clamp Hose Blk
35	17490512	Screw Thdrol 5/16-18 x 3/4
37	137040	Line Fuel
38	-----	Plug Oil Drain (Order From Engine Manufacturer)
44	17490412	Screw Hexwsh Thdrol 1/4-20x3/4
46	19091416	Washer 9/32 X 7/8 X 16 Ga
62	10040500	Washer 5/16
66	127951	Stop Throttle
72	71070512	Screw 5/16-18 x 3/4
78	17490620	Screw Thdrol 3/8-16x1-1/4 TYTT
81	128861	Nut Flange 1/4-20 Starter Nut

NOTE: All component dimensions given in U.S. inches.
1 inch = 25.4 mm.

REPAIR PARTS

TRACTOR - - MODEL NUMBER WZ145H42C

MOWER LIFT



REPAIR PARTS

TRACTOR - - MODEL NUMBER WZ145H42C

MOWER LIFT

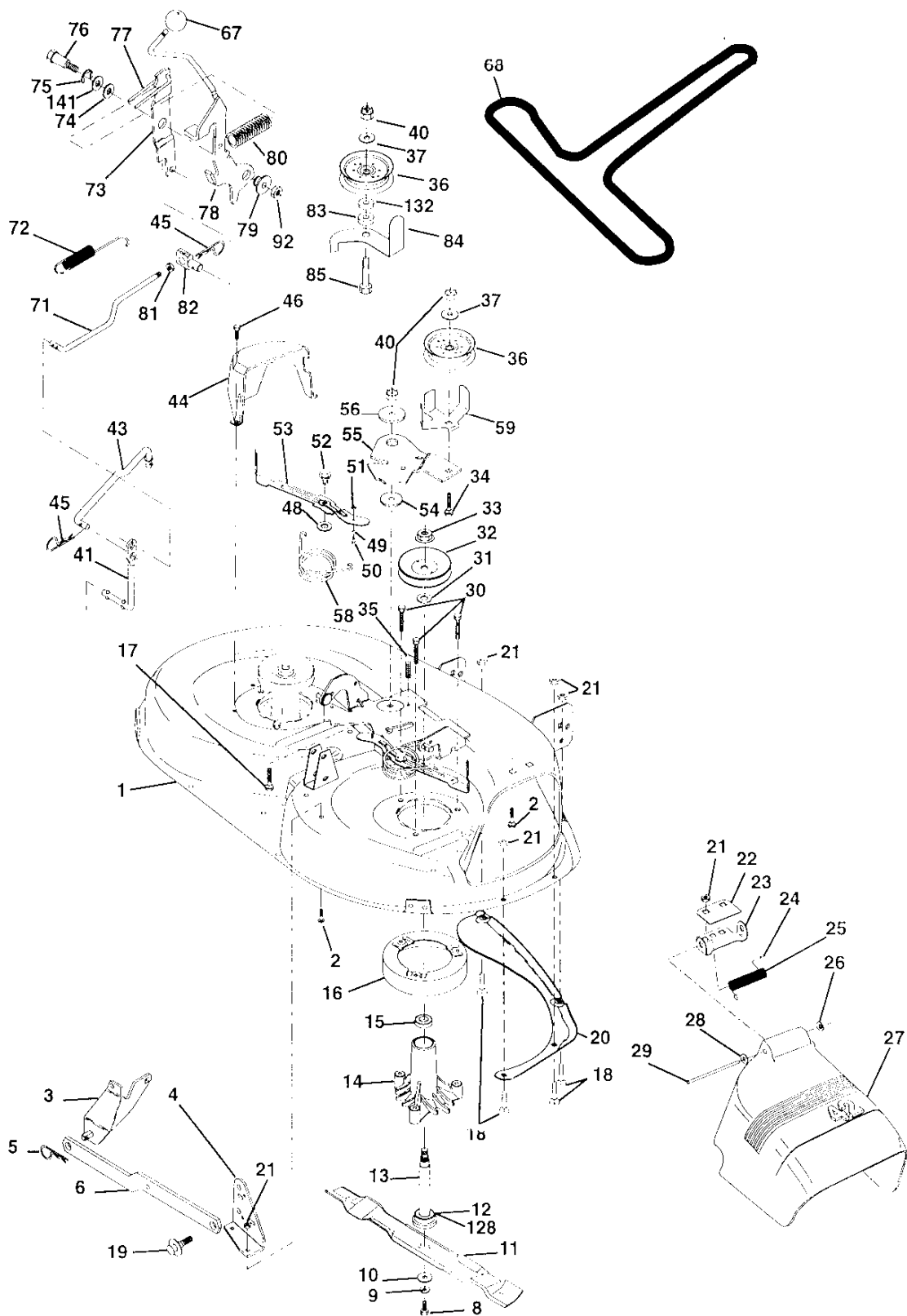
KEY NO.	PART NO.	DESCRIPTION
1	159460	Wire Asm. Inner/Sprg w/Plunger
2	159471	Shaft, Asm., Lift R/H
3	105767X	Pin, Groove
4	12000002	Ring, E #5133-62
5	19211621	Washer 21/32 x 1 x 21 Ga.
6	120183X	Bearing, Nylon
7	109413X	Grip Handle Bicycle Matte Blk
8	124526X	Button, Plunger
11	139865	Link, Lift, Lh
12	139866	Link, Lift, Rh
13	4939M	Spring, Retainer
15	127218	Link, Front
16	73350800	Nut, Jam, Hex 1/2-13 Unc
17	130171	Trunnion
18	73680800	Nut, Crownlock 1/2-13 Unc
19	139868	Arm, Suspension, Rear
20	163552	Spring, Retainer
31	140302	Bearing, Pvt Lft
32	73540600	Nut Crownlock 3/8-24

NOTE: All component dimensions given in U.S. inches
1 inch = 25.4 mm

REPAIR PARTS

TRACTOR - - MODEL NUMBER WZ145H42C

LOWER DECK



REPAIR PARTS

TRACTOR - - MODEL NUMBER WZ145H42C

MOWER DECK

KEY NO.	PART NO.	DESCRIPTION	KEY NO.	PART NO.	DESCRIPTION
1	164961	Housing Asm MWR	44	140088	Guard Mandrel LH Black
2	72140506	Bolt Rdhd Sqnk 5/16-18unc X3/4	45	4497H	Spring Retainer 1" Zinc/cad
3	138017	Bracket Asm Fr Sway Bar 38/42	46	137729	Screw Hex Thd Cut 1/4-24 UNC
4	138440	Bracket Asm Deck 42"sway Bar	48	133944	Washer Hardened Smaller
5	4939M	Retainer Spring	49	155066	Roller Asm Cam Follower 42"dec
6	130832	Arm Suspension Rear	50	131340	Bolt Shldr 10-24 Zinc Gr 5 42"
8	850857	Bolt 3/8-24x1 25 Gr8 Patched	51	69180	Nut Lock #10-24 Unc
9	10030600	Washer Lock Hvy 3/8 Unplated	52	139888	Bolt Shoulder 5/16-18 Unc Blkz
10	140296	Washer Hard Blade Mower Vented	53	131845	Arm Asm Pad Brake
11	138498	Blade Mower 42" High Lift	54	133943	Washer Hardened
12	129895	Bearing Ball #6204 (Mandrel)	55	155046	Arm Idler 42" mower
13	137645	Shaft Asm W/lower Bearing	56	122052X	Spacer Retainer Pm Mower
14	128774	Housing Mandrel Vented(machd)	58	140086	Spring Torsion Brakes 42"
15	110485X	Bearing Ball Mandrel	59	141043	Guard TUV Idler
16	140329	Stripper Mower Round	67	162132	Knob Rd 7/16-14 Pastic Thds Blk
17	72110610	Bolt Rdhd Sqnk 3/8-16 X 1.25	68	144200	V-Belt Mower
18	72140505	Bolt Carr 5/16-18 X 5/8	71	142427	Rod Clutch Primary 38/42
19	132827	Bolt Shoulder	72	131870	Spring Return
20	159770	Baffle Vortex 42	73	127847	Arm Clutch Secondary
21	73680500	Nut Crown Lock 5/16-18	74	121748X	Washer 25/32 X 1-5/8 X 16 Ga
22	134753	Stiffener Bracket 42"deck	75	12000029	Ring Klip #t5304-75
23	131267	Bracket Deflector Mower 42"	76	128903	Bolt Shoulder 3/8-16 Unc 1 44
24	105304X	Cap Sleeve 80x 112 Blk Mower	77	127845	Keeper Spring 4 000
25	123713X	Spring Torsion Deflector 2 52	78	160570	Arm Clutch Primary
26	110452X	Nut Push Phos & Oil	79	127498	Bushing 747 Od X 794 Lg Brass
27	130968	Shield Deflector Mower 42" Blk	80	153701	Spring Clutch Mower
28	19111016	Washer 11/32 X 5/8 X 16 Ga	81	73350600	Nut Hex Jam 3/8-16
29	131491	Rod Hinge 42"6 75 Wlg	82	142028	Trunnion Adj.
30	157722	Screw Thdrol Washer Hd	83	120958X	Washer Sintered
31	129963	Washer Spacer Mower Vented	84	156084	Keeper Belt Idler
32	153535	Pulley Mandrel 42/44/50"	85	72140620	Bolt Rdhd Sq 3/8-16 UNC x2-1/2
33	137266	Nut 9/16top Lock Flng	92	73800600	Nut Lock Hex w/Ins 3/8-16 UNC
34	72110614	Bolt Rdhd 3/8-16uncx1-3/4 Gr5	128	153390	Washer Felt
35	133835	Fastner Christmas Tree	132	19132203	Washer 13/32 x 1-3/8 x 3 Ga.
36	131494	Pulley Idler Flat 3 060	141	6266H	Wasehr Thrust .75 x 1.230
37	19131316	Washer 13/32 x 13/16 x 16 Ga.	- -	130794	Mandrel Assembly (Includes Key Numbers 8-10, 12-15, 31 and 33)
40	73680600	Nut Crownlock 3/8-16 Unc	- -	164962	Deck, Std (Complete)
41	133551	Rod Pivot W/nibs			
43	140083	Rod Clutch Secondary W/nibs			

NOTE: All component dimensions given in U.S. inches
1 inch = 25.4 mm

LIMITED WARRANTY

The Manufacturer warrants to the original consumer purchaser that this product as manufactured is free from defects in materials and workmanship. For a period of one (1) year from date of purchase by the original consumer purchaser, we will repair or replace, at our option, without charge for parts or labor incurred in replacing parts, any part which we find to be defective due to materials or workmanship. This Warranty is subject to the following limitations and exclusions.

1. This warranty does not apply to the engine. Please contact your nearest dealer where they will send the machine to the engine manufacturer.
2. Transportation charges for the movement of any power equipment unit or attachment are the responsibility of the purchaser. Transportation charges for any parts submitted for replacement under this warranty must be paid by the purchaser unless such return is requested by your dealer.
3. Battery Warranty: On products equipped with a Battery, we will replace, without charge to you, any battery which we find to be defective in manufacture, during the first ninety (90) days of ownership. After ninety (90) days, we will exchange the Battery, charging you 1/12 of the price of a new Battery for each full month from the date of the original sale. Battery must be maintained in accordance with the instructions furnished.
4. The Warranty period for any products used for rental or commercial purposes is limited to 90 days from the date of original purchase.
5. This Warranty applies only to products which have been properly assembled, adjusted, operated, and maintained in accordance with the instructions furnished. This Warranty does not apply to any product which has been subjected to alteration, misuse, abuse, improper assembly or installation, delivery damage, or to normal wear of the product.
6. Exclusions: Excluded from this Warranty are belts, blades, blade adapters, normal wear, normal adjustments, standard hardware and normal maintenance.
7. In case of any problem within the boundaries of this warranty, contact the nearest department store, indicate the model number, serial number and the date of purchase of your machine. This warranty does not apply to accidental damages. All implicit warranties are limited to the same time frames. Or contact:

E.M. Services
54 Rue Lambrechts
92400 Courbevoie
France
Telephone: (1) 46678078
Fax: (1) 46678095

THIS WARRANTY DOES NOT APPLY TO INCIDENTAL OR CONSEQUENTIAL DAMAGES. ANY IMPLIED WARRANTIES ARE LIMITED TO THE SAME TIME PERIODS STATED HEREIN.

WIZARD